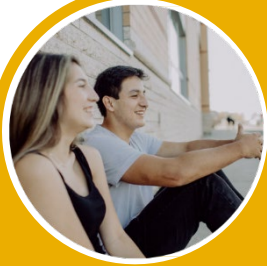


RRDSB Strategic Plan



Culture of Caring

Our students and staff experience a sense of belonging in safe, caring environments that will encourage their well-being and mental health.

We build supportive relationships with students to deliver equitable and inclusive learning experiences.

We work with families, partners, and communities in mutually respectful and productive relationships to enhance the success of all students.

Culture of Lifelong Learning



Our students pursue pathways that reflect their individual interests and needs, building their skills for the future.

We support our students through high expectations in teaching and learning.

We recognize, respect, and honour the experiences of students and families, to provide learning opportunities that are culturally relevant and responsive to students' needs.

MISSION

Together, we empower all students to believe in themselves, to achieve, and to dream

VISION

The Rainy River District School Board is an innovative community, nurturing hearts and minds, to build a foundation for tomorrow, today.



Culture of Caring

Our students and staff experience a sense of belonging in safe, caring environments that will encourage their well-being and mental health.

Actions:

- Implement the 2023-2025 Mental Health and Addictions Plan, which includes providing:
 - identity-affirming mental health supports to students
 - mental health literacy for staff and students
 - opportunities for student engagement, leadership, and agency in mental health promotion

How will we know?

- 80% of students indicate awareness of mental health support pathways, both in and outside of the school.
- 70% of students indicate that they feel a sense of belonging in their schools.

Culture of Caring

We build supportive relationships with students to deliver equitable and inclusive learning experiences.

Actions:

- Implement the Equity Plan, which includes:
 - providing the Equity Backpack Program within all elementary schools
 - ensuring that school and classroom practices reflect and respond to the diversity of staff and students
 - implementing antisemitism education in Grade 6 Social Studies
- Formalize a plan to provide nutrition programming and other equity supports for all schools.

How will we know?

- 100% of students in Grade 6 classrooms implement the Equity Backpack Program.
- 80% of students in Grades 4 to 8 indicate that they learn about people of diverse backgrounds, identities, and abilities.



Culture of Caring

We work with families, partners, and communities in mutually respectful and productive relationships to enhance the success of all students.

Actions:

- Update the Long-term Facility Master Plan to ensure safe, supportive, and enhanced student accommodations for all school communities.
- Work with our advisory committees and school councils to inform the ongoing development and work within the RRDSB Student Achievement Plan.*

How will we know?

- The Long-term Facility Master Plan is approved by the Board by February 2024.
- School community and advisory committee feedback inform the development on the RRDSB Student Achievement Plan



Culture of Lifelong Learning

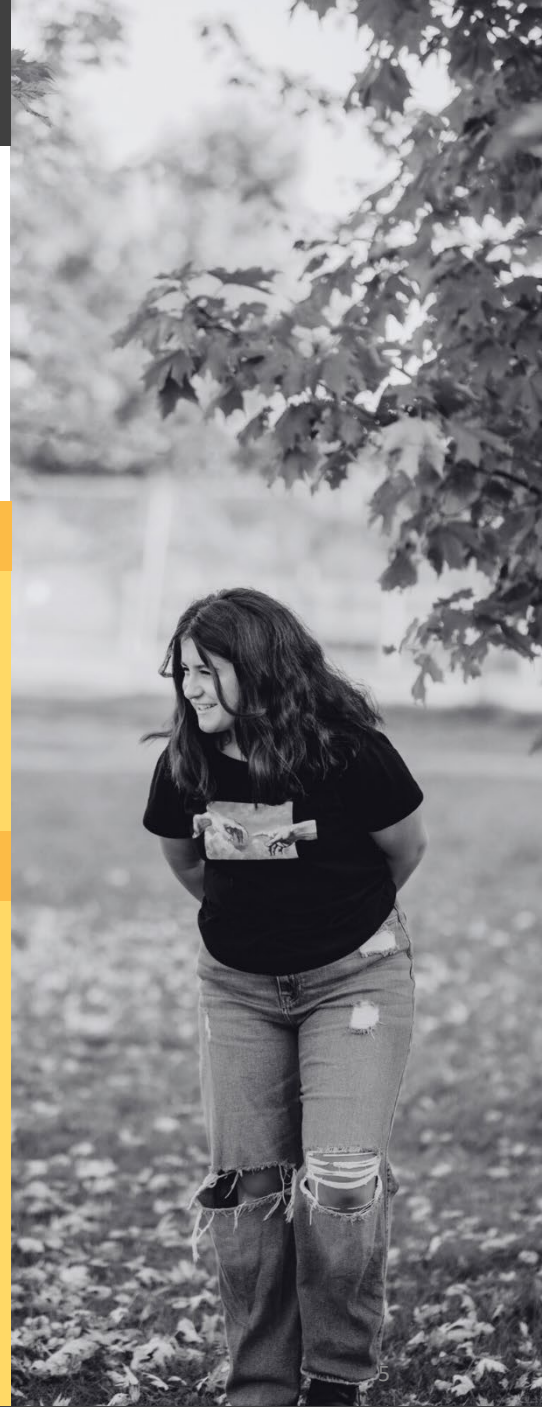
Our students pursue learning pathways that reflect their individual interests and needs, building their skills for the future.

Actions:

- Fully implement the Individual Pathway Planning process within all Grade 7 to 12 classrooms.
- Review and update our Alternative Education programming.

How will we know?

- All Grades 7 to 9 and Grade 10 Careers classes implement the Pathway Planning lessons.
- All initial Guidance department visits involve updating students' Individual Pathway Plans.
- Our Alternative Education programming is re-envisioned to provide more flexibility and options for students, resulting in a 10% reduction in Supervised Alternative Learning Program enrolment.



Culture of Lifelong Learning

We support our students through high expectations in teaching and learning.

Actions:

- Implement Heggerty Literacy Program™ across all K-3 classes.
- Expand Empower™ Reading Program to five schools.
- Implement Math assessments to support fact fluency in all Gr. 1-8 classrooms, focusing on priority schools in Grades 3 and 6.
- Implement elementary resources (*Mathology™* and *My Math Path™*) in all K-8 classrooms.
- Support Grade 9 de-streamed math classes to utilize Knowledgehook – Instructional Guidance System™.

How will we know?

- These Student Achievement Plan action items are implemented across all schools.*



Culture of Lifelong Learning

We recognize, respect, and honor the experiences of students and families, to provide learning opportunities that are culturally relevant and responsive to students' needs.

Actions:

- Formalize local curriculum connections across the Board to enhance our experiential learning programming.
- Continue to support the priorities within the FNMI Board Action Plan, which includes the connecting of Elders, Senators, and Knowledge Keepers with each school and the support for the revised Gr. 1-3 Social Studies FNMI curriculum implementation.

How will we know?

- All schools engage Elders, Senators, and Knowledge Keepers to enhance the learning of students and staff.

